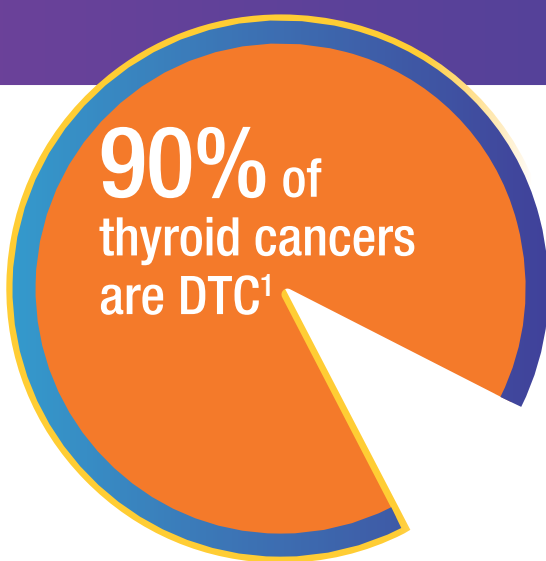


If you have been diagnosed with papillary or follicular thyroid cancer, also known as differentiated thyroid cancer (DTC), TIME is a program designed to help you make informed treatment decisions

...WHAT'S RIGHT FOR YOU



DTC has the best chance for treatment success²

TIME to think about your treatment journey

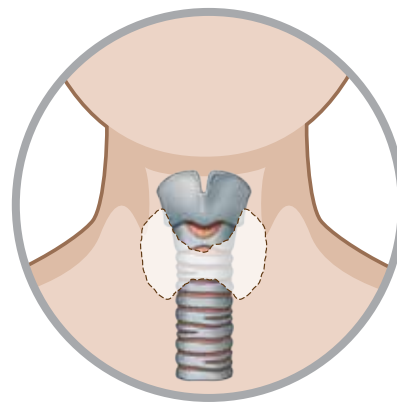
Observation Without Surgery (Watch and Wait)

A diagnosis of thyroid cancer will almost always lead to surgery.³ Some research hospitals may enroll patients in a clinical research study in which patients do not receive any treatment or surgery. This is not the standard of care.

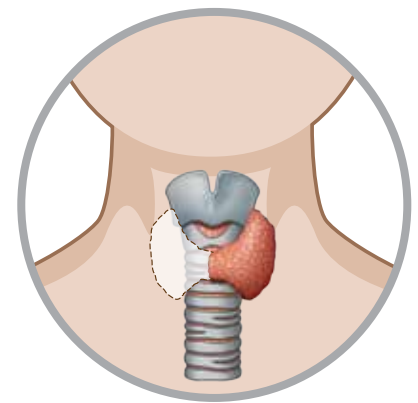
Surgery

First Step in Treatment⁴

Thyroid cancer cells are microscopic (very small) and may not be completely removed with surgery



Total Thyroidectomy
Removes all or most of your thyroid gland



Lobectomy
Removes part of your thyroid gland

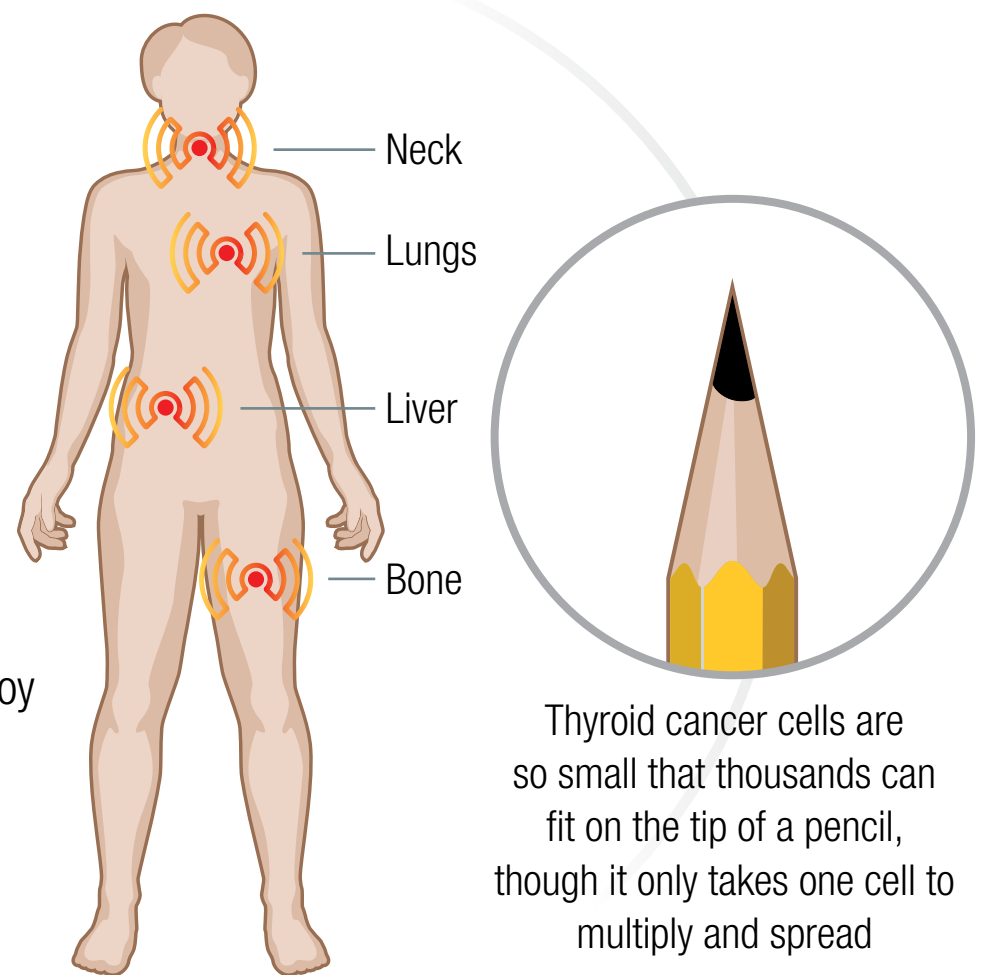
Radioactive Iodine (Iodine-131)

Added Assurance⁵

- Destroys thyroid cancer cells that remain after total thyroidectomy or that have spread to other parts of the body
- Minimizes the risk of thyroid cancer coming back

How Does Radioactive Iodine Work?

- Thyroid cancer cells have "iodine pumps" that absorb the radioactive iodine
- As a result, radioactive iodine can find and destroy DTC cells anywhere in the body



Radioactive Iodine (Iodine-131) Is Usually Well Tolerated*

Short-term side effects some patients may experience that typically go away on their own in the hours or days after treatment⁶

- Nausea and upset stomach
- Swelling and tenderness of the salivary glands
- Temporary taste changes

Longer-term side effects patients may sometimes experience

- Intermittent obstruction of saliva flow (12% of patients)⁷
- Dry mouth (5% of patients)⁷
- Blocked tear duct (5% of patients)⁷

*Ask your doctor about side effects of radioactive iodine.

Other Considerations

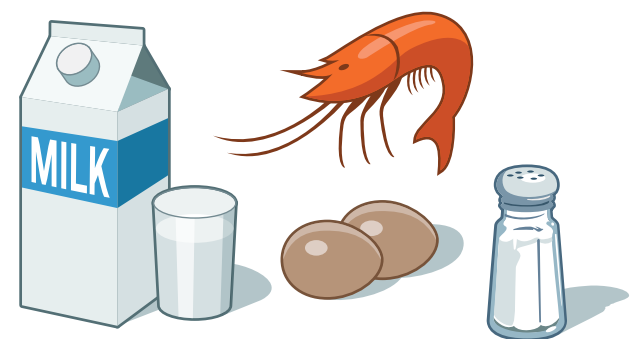
80% or more of radioactive activity is usually eliminated within 48 hours⁷

Isolation Period

Limited Exposure

Patients typically resume normal activities within 1-5 days³

Patients should avoid food high in iodine about 2 weeks before and 1-2 days after therapy



Radioactive iodine has been used to treat DTC patients for more than 70 years

Radioactive iodine is the recommended treatment for destroying thyroid cancer cells that have spread in the body⁸

THYROIDECTOMY • Surgery as initial treatment to remove all or most of the thyroid gland
IODINE-131 THERAPY • Radioactive iodine to destroy cells left behind or that have spread
MONITORING • Active surveillance to watch for possible recurrence
EDUCATION • Educate patients to improve their ability to make informed decisions about their care

For more information on the TIME program, visit www.draximage.com/TIME

References: 1. American Cancer Society. What Is Thyroid Cancer? <https://www.cancer.org/cancer/thyroid-cancer/about/what-is-thyroid-cancer.html>. Accessed February 23, 2017. 2. American Cancer Society. Thyroid Cancer Survival Rates, by Type and Stage. <https://www.cancer.org/cancer/thyroid-cancer/detection-diagnosis-staging/survival-rates.html>. Accessed February 23, 2017. 3. American Thyroid Association. Radioactive Iodine. <http://www.thyroid.org/radioactive-iodine>. Accessed February 23, 2017. 4. American Cancer Society. Surgery for Thyroid Cancer. <https://www.cancer.org/cancer/thyroid-cancer/treating/surgery.html>. Accessed February 23, 2017. 5. Ain KB. Radioiodine-remnant ablation in low-risk differentiated thyroid cancer: pros. *Endocrine*. 2015;50(1):61-66. 6. Van Nostrand D, Bandaru V, Chennupati S, et al. Radiopharmacokinetics of radioiodine in the parotid glands after the administration of lemon juice. *Thyroid*. 2010;20(10):1113-1119. 7. Hewamanna R, Loganathan N, Perera DKA. Releasing thyroid cancer patients from the hospital based on dose rate measurement after 131I activity administration. *J Natn Sci Foundation Sri Lanka*. 2014;42(2):137-141. 8. Haugen BR, Alexander EK, Bible KC, et al. 2015 American Thyroid Association Management Guidelines for Adult Patients with Thyroid Nodules and Differentiated Thyroid Cancer. *Thyroid*. 2016; 26(1):1-133.